

HSE 방폭용 솔레노이드 밸브(2-WAY N/C TYPE)

Explosion proof solenoid valve

Certification No. 18-GA2BO-0123X

Exd mb IIC T4 IP67

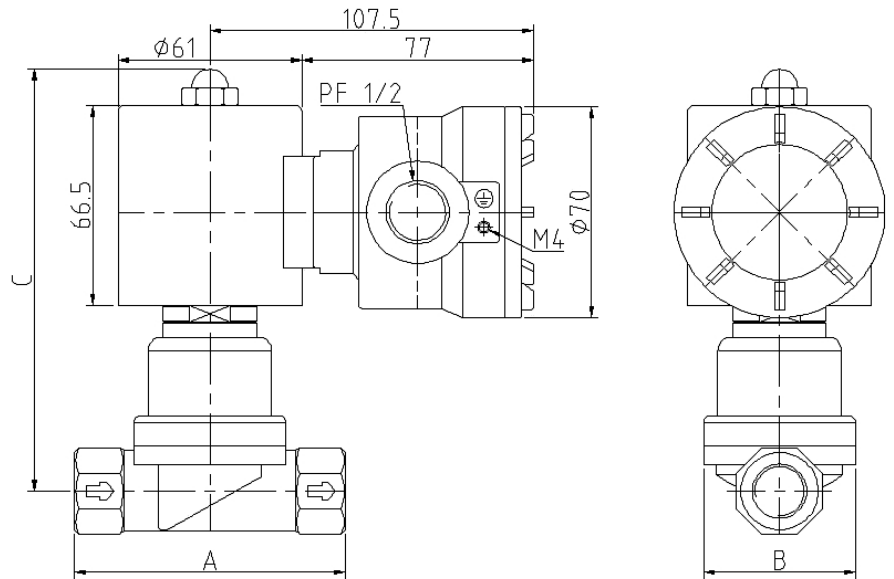
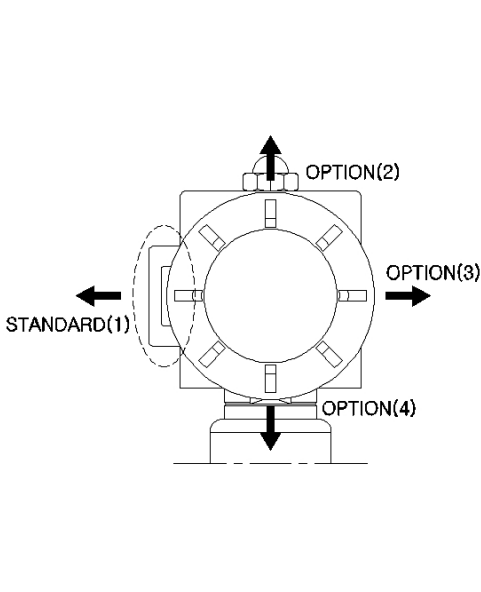


□ 형식(MODEL) : 방폭코일 M-TYPE

MODEL NO.	VOLTAGE	Hz	WATTAGE	REMARK
HMA-243056	AC 240V	50/60Hz	30±10%	OPTION
HMA-223056	AC 220V	50/60Hz	30±10%	STANDARD
HMA-113056	AC 110V	50/60Hz	30±10%	OPTION
HMA-103056	AC 100V	50/60Hz	30±10%	OPTION
HMD-024300	DC 24V	-	30±10%	STANDARD
HMD-110300	DC 110V	-	30±10%	OPTION
HMD-125300	DC 125V	-	30±10%	OPTION

□ CABLE CONNECTION LINE

□ 외형도(DIMENSIONS)



□ 적용품목(APPLICATION MODEL)

MODEL	A	B	C	BODY TYPE	PT(Rc) SIZE	PRESSURE	BODY MAT'L
HKW 154B-EX	66	51	137.5	SCREW	PT(Rc)1/2"	0~10Kgf/cm ²	BRASS
HKW 206B-EX	92	65	143.5	SCREW	PT(Rc)3/4"	0~10Kgf/cm ²	BRASS
HKW 2510B-EX	92	65	145.5	SCREW	PT(Rc)1"	0~10Kgf/cm ²	BRASS
HKW 154S-EX	90	50	140	SCREW	PT(Rc)1/2"	0~10Kgf/cm ²	STS
HKW 206S-EX	100	65	144.5	SCREW	PT(Rc)3/4"	0~10Kgf/cm ²	STS
HKW 2510S-EX	110	65	148.5	SCREW	PT(Rc)1"	0~10Kgf/cm ²	STS
HPW 8030-EX	250	196	206	SCREW	PT(Rc)3"	0.5~10Kgf/cm ²	BRASS
HPW 8030-20EX	250	196	278	SCREW	PT(Rc)3"	1.0~20Kgf/cm ²	BRASS

*기타사양은 HSE에 문의 요망, 도면치수 및 제품사양은 품질향상을 위해 변경될 수 있음

CONSULT WITH HSE ABOUT OTHER OPTION SPECIFICATIONS,

PRODUCT SPECIFICATION IS TO SUBJECT TO THE QUALITY ENHANCEMENT.

HSE 방폭용 솔레노이드 밸브(2-WAY N/C TYPE)

Explosion proof solenoid valve

Certification No. 18-GA2BO-0121X

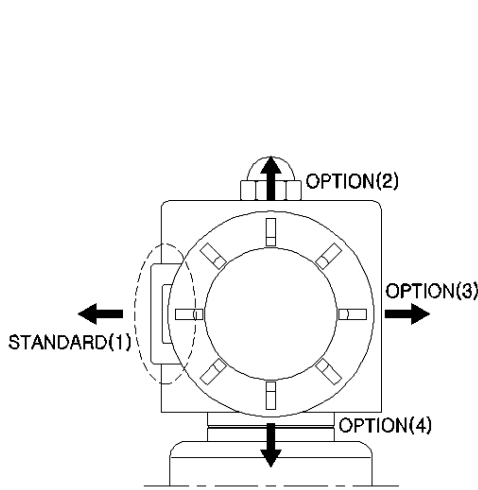
Exd mb IIC T4 IP67



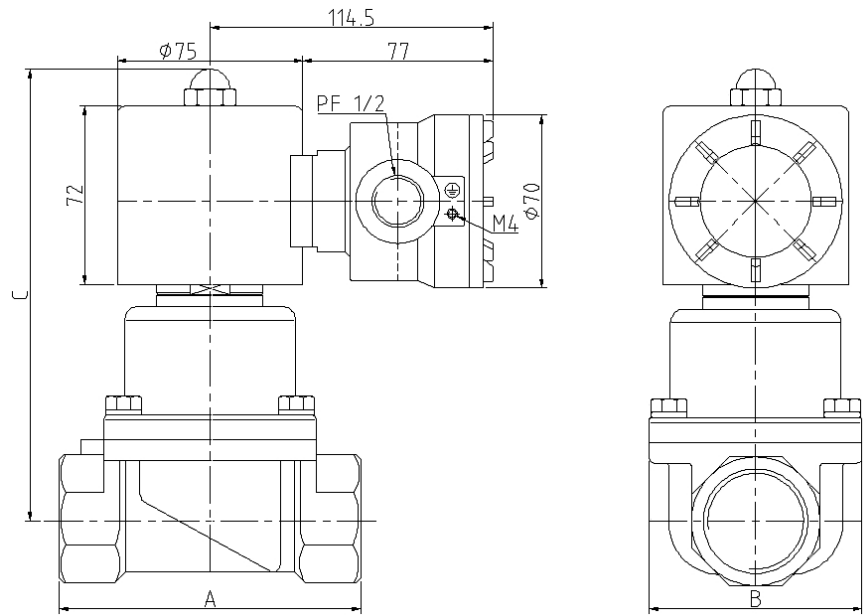
□ 형식(MODEL) : 방폭코일 L-TYPE

MODEL NO.	VOLTAGE	Hz	WATTAGE	REMARK
HLA-243056	AC 240V	50/60Hz	30±10%	OPTION
HLA-223056	AC 220V	50/60Hz	30±10%	STANDARD
HLA-113056	AC 110V	50/60Hz	30±10%	OPTION
HLA-103056	AC 100V	50/60Hz	30±10%	OPTION
HLD-024300	DC 24V	-	30±10%	STANDARD
HLD-110300	DC 110V	-	30±10%	OPTION
HLD-125300	DC 125V	-	30±10%	OPTION

□ CABLE CONNECTION LINE



□ 외형도(DIMENSIONS)



□ 적용품목(APPLICATION MODEL)

MODEL	A	B	C	BODY TYPE	PT(Rc) SIZE	PRESSURE	BODY MAT'L
HKW 3212B-EX	122	86	183	SCREW	PT(Rc)1 1/4"	0~10Kgf/cm ²	BRASS
HKW 4014B-EX	122	86	186	SCREW	PT(Rc)1 1/2"	0~10Kgf/cm ²	BRASS
HKW 5020B-EX	140	100	191	SCREW	PT(Rc)2"	0~10Kgf/cm ²	BRASS
HKW 3212S-EX	122	86	183	SCREW	PT(Rc)1 1/4"	0~10Kgf/cm ²	STS
HKW 4014S-EX	122	86	186	SCREW	PT(Rc)1 1/2"	0~10Kgf/cm ²	STS
HKW 5020S-EX	140	100	191	SCREW	PT(Rc)2"	0~10Kgf/cm ²	STS
HKD 3212B-EX	122	86	163	SCREW	PT(Rc)1 1/4"	0~10Kgf/cm ²	BRASS
HKD 4014B-EX	122	86	166	SCREW	PT(Rc)1 1/2"	0~10Kgf/cm ²	BRASS
HKD 5020B-EX	140	100	172	SCREW	PT(Rc)2"	0~10Kgf/cm ²	BRASS
HKD 3212S-EX	122	86	163	SCREW	PT(Rc)1 1/4"	0~10Kgf/cm ²	STS
HKD 4014S-EX	122	86	166	SCREW	PT(Rc)1 1/2"	0~10Kgf/cm ²	STS
HKD 5020S-EX	140	100	172	SCREW	PT(Rc)2"	0~10Kgf/cm ²	STS

*기타사양은 HSE에 문의 요망, 도면치수 및 제품사양은 품질향상을 위해 변경될 수 있음

CONSULT WITH HSE ABOUT OTHER OPTION SPECIFICATIONS,
PRODUCT SPECIFICATION IS TO SUBJECT TO THE QUALITY ENHANCEMENT.

HSE 방폭용 솔레노이드 밸브(2-WAY N/C FLANGE TYPE) Certification No. 18-GA2BO-0123X

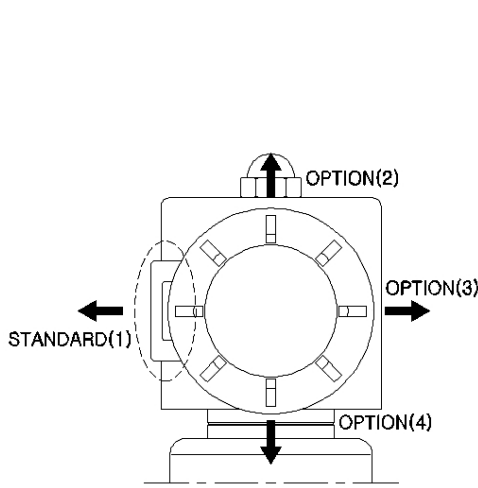
Explosion proof solenoid valve Exd mb IIC T4 IP67



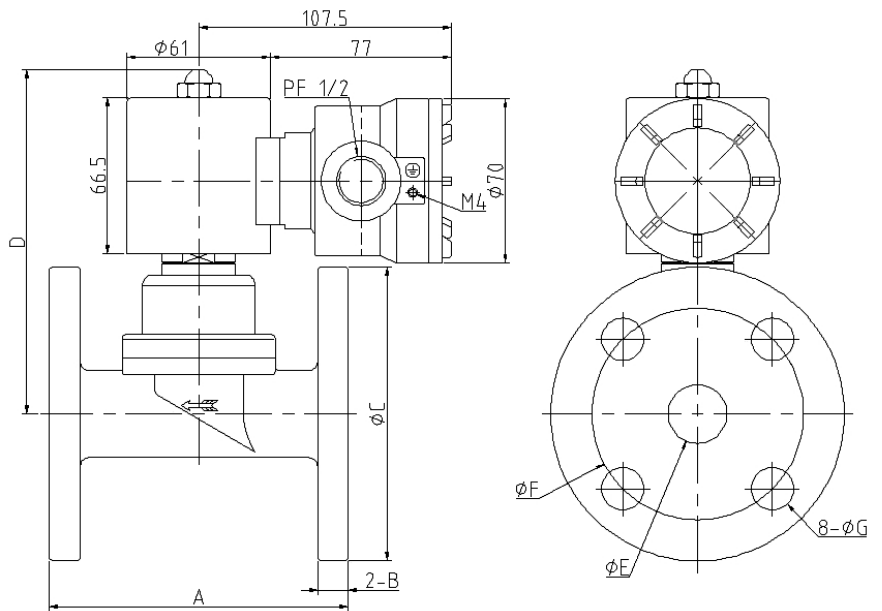
□ 형식(MODEL) : 방폭코일 M-TYPE

MODEL NO.	VOLTAGE	Hz	WATTAGE	REMARK
HMA-243056	AC 240V	50/60Hz	30±10%	OPTION
HMA-223056	AC 220V	50/60Hz	30±10%	STANDARD
HMA-113056	AC 110V	50/60Hz	30±10%	OPTION
HMA-103056	AC 100V	50/60Hz	30±10%	OPTION
HMD-024300	DC 24V	-	30±10%	STANDARD
HMD-110300	DC 110V	-	30±10%	OPTION
HMD-125300	DC 125V	-	30±10%	OPTION

□ CABLE CONNECTION LINE



□ 외형도(DIMENSIONS)



□ 적용품목(APPLICATION MODEL)

MODEL	A	B	C	D	E	F	G	BODY TYPE	FLANGE	PRESSURE	BODY MAT'L
HKW 2510BF-EX	127	13	125	146.5	25	90	18	FLANGE	25A	0~10Kgf/cm ²	BRASS
HKW 2510SF-EX	127	13	125	146.5	25	90	18	FLANGE	25A	0~10Kgf/cm ²	STS
HPW 8030F-EX	255	16	185	205.5	80	150	19	̸80mm	80A	1.0~10Kgf/cm ²	BRASS
HPW 8030F-20EX	255	16	185	205.5	80	150	19	̸80mm	80A	1.0~20Kgf/cm ²	BRASS

*기타사양은 HSE에 문의 요망, 도면치수 및 제품사양은 품질향상을 위해 변경될 수 있음

CONSULT WITH HSE ABOUT OTHER OPTION SPECIFICATIONS,
PRODUCT SPECIFICATION IS TO SUBJECT TO THE QUALITY ENHANCEMENT.

HSE 방폭용 솔레노이드 밸브(2-WAY N/C FLANGE TYPE) Certification No. 18-GA2BO-0121X

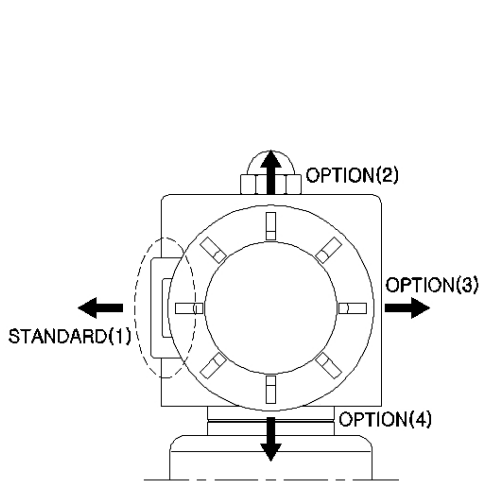
Explosion proof solenoid valve Exd mb IIC T4 IP67

□ 형식(MODEL) : 방폭코일 L-TYPE

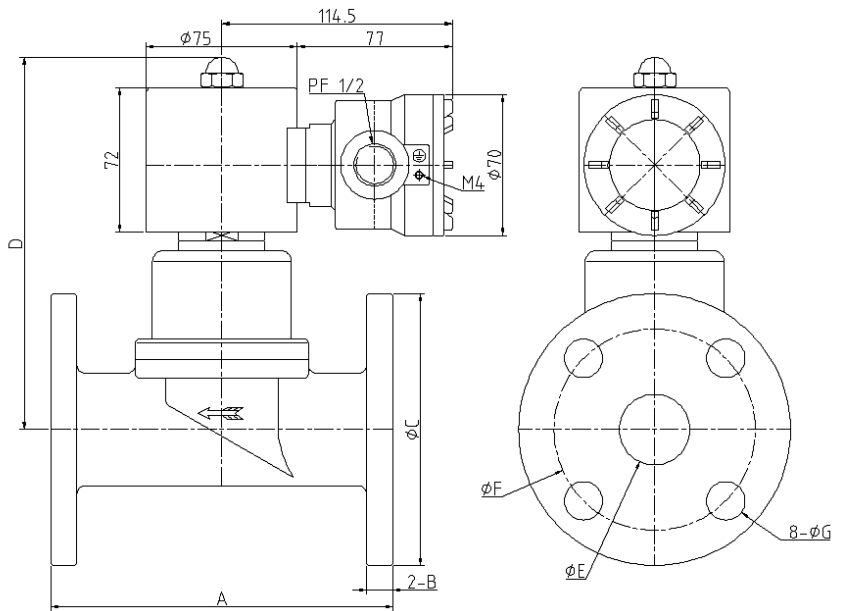
MODEL NO.	VOLTAGE	Hz	WATTAGE	REMARK
HLA-243056	AC 240V	50/60Hz	30±10%	OPTION
HLA-223056	AC 220V	50/60Hz	30±10%	STANDARD
HLA-113056	AC 110V	50/60Hz	30±10%	OPTION
HLA-103056	AC 100V	50/60Hz	30±10%	OPTION
HLD-024300	DC 24V	-	30±10%	STANDARD
HLD-110300	DC 110V	-	30±10%	OPTION
HLD-125300	DC 125V	-	30±10%	OPTION



□ CABLE CONNECTION LINE



□ 외형도(DIMENSIONS)



□ 적용품목(APPLICATION MODEL)

MODEL	A	B	C	D	E	F	G	BODY TYPE	FLANGE	PRESSURE	BODY MAT'L
HKW 3212BF-EX	170	13	135	186	35	100	18	FLANGE	32A	0~10Kgf/cm ²	BRASS
HKW 4014BF-EX	170	13	140	186	40	105	18	FLANGE	40A	0~10Kgf/cm ²	BRASS
HKW 5020BF-EX	180	14	155	191	50	120	18	FLANGE	50A	0~10Kgf/cm ²	BRASS
HKW 3212SF-EX	170	13	135	187	35	100	19	FLANGE	32A	0~10Kgf/cm ²	STS
HKW 4014SF-EX	180	13	140	189	40	105	19	FLANGE	40A	0~10Kgf/cm ²	STS
HKW 5020SF-EX	180	14	155	194	50	120	19	FLANGE	50A	0~10Kgf/cm ²	STS
HKD 3212BF-EX	170	13	135	166	35	100	18	FLANGE	32A	0~10Kgf/cm ²	BRASS
HKD 4014BF-EX	170	13	140	166	40	105	18	FLANGE	40A	0~10Kgf/cm ²	BRASS
HKD 5020BF-EX	180	14	155	171	50	120	18	FLANGE	50A	0~10Kgf/cm ²	BRASS
HKD 3212SF-EX	170	13	135	166	35	100	19	FLANGE	32A	0~10Kgf/cm ²	STS
HKD 4014SF-EX	180	13	140	168	40	105	19	FLANGE	40A	0~10Kgf/cm ²	STS
HKD 5020SF-EX	180	14	155	173	50	120	19	FLANGE	50A	0~10Kgf/cm ²	STS

*기타사양은 HSE에 문의 요망, 도면치수 및 제품사양은 품질향상을 위해 변경될 수 있음

CONSULT WITH HSE ABOUT OTHER OPTION SPECIFICATIONS,
PRODUCT SPECIFICATION IS TO SUBJECT TO THE QUALITY ENHANCEMENT.

HSE 방폭용 솔레노이드 밸브(2-WAY N/O TYPE)

Explosion proof solenoid valve

Certification No. 18-GA2BO-0123X

Exd mb IIC T4 IP67

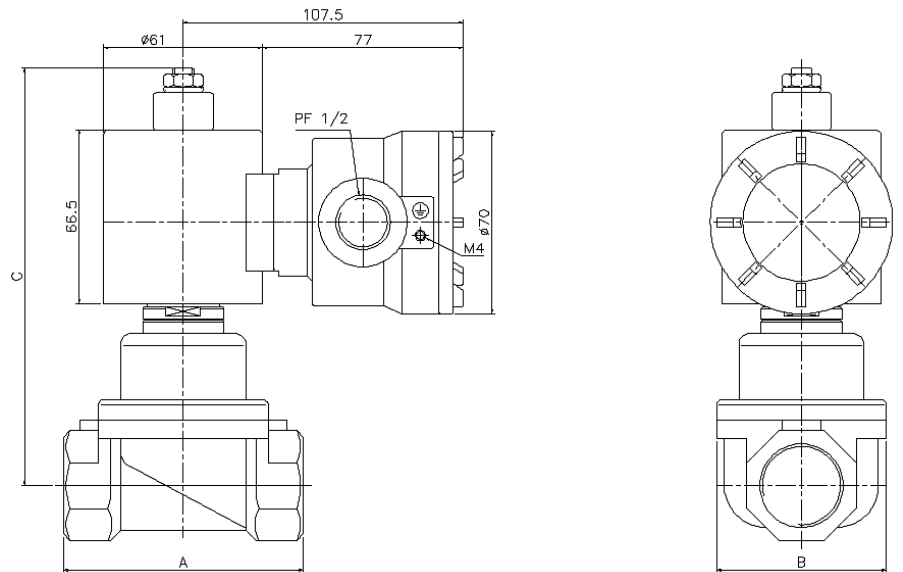
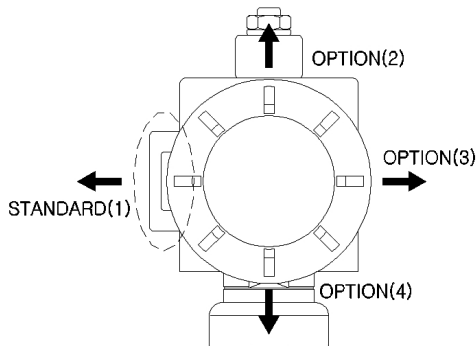


□ 형식(MODEL) : 방폭코일 M-TYPE

MODEL NO.	VOLTAGE	Hz	WATTAGE	REMARK
HMA-243056	AC 240V	50/60Hz	30±10%	OPTION
HMA-223056	AC 220V	50/60Hz	30±10%	STANDARD
HMA-113056	AC 110V	50/60Hz	30±10%	OPTION
HMA-103056	AC 100V	50/60Hz	30±10%	OPTION
HMD-024300	DC 24V	-	30±10%	STANDARD
HMD-110300	DC 110V	-	30±10%	OPTION
HMD-125300	DC 125V	-	30±10%	OPTION

□ CABLE CONNECTION LINE

□ 외형도(DIMENSIONS)



□ 적용품목(APPLICATION MODEL)

MODEL	A	B	C	BODY TYPE	PT(Rc) SIZE	PRESSURE	BODY MAT'L
HKW 154BNO-EX	66	51	153.5	SCREW	PT(Rc)1/2"	0~10Kgf/cm ²	BRASS
HKW 206BNO-EX	92	65	159	SCREW	PT(Rc)3/4"	0~10Kgf/cm ²	BRASS
HKW 2510BNO-EX	92	65	163	SCREW	PT(Rc)1"	0~10Kgf/cm ²	BRASS
HKW 154SNO-EX	90	50	153	SCREW	PT(Rc)1/2"	0~10Kgf/cm ²	STS
HKW 206SNO-EX	100	65	158	SCREW	PT(Rc)3/4"	0~10Kgf/cm ²	STS
HKW 2510SNO-EX	110	65	162	SCREW	PT(Rc)1"	0~10Kgf/cm ²	STS
HPW 8030NO-EX	250	196	213.5	SCREW	PT(Rc)3"	0.5~10Kgf/cm ²	BRASS

*기타사양은 HSE에 문의 요망, 도면치수 및 제품사양은 품질향상을 위해 변경될 수 있음

CONSULT WITH HSE ABOUT OTHER OPTION SPECIFICATIONS,
PRODUCT SPECIFICATION IS TO SUBJECT TO THE QUALITY ENHANCEMENT.

HSE 방폭용 솔레노이드 밸브(2-WAY N/O TYPE)

Explosion proof solenoid valve

Certification No. 18-GA2BO-0121X

Exd mb IIC T4 IP67

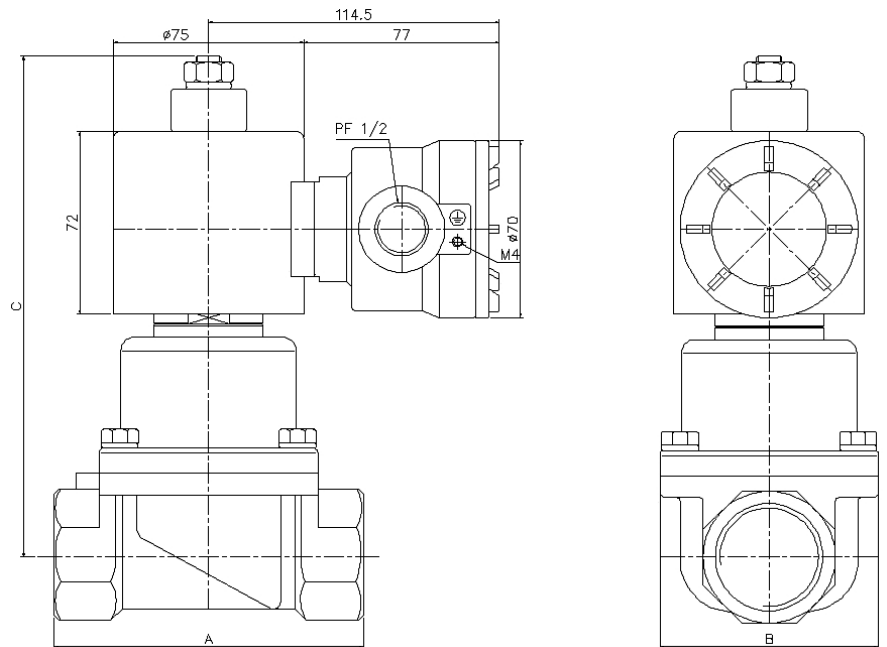
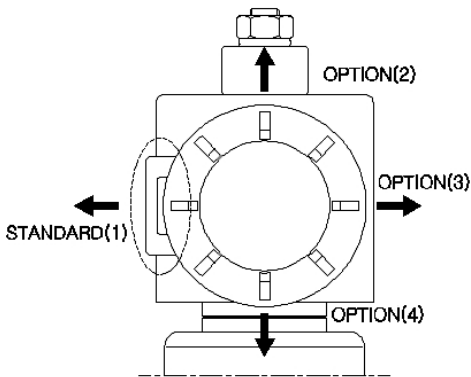


□ 형식(MODEL) : 방폭코일 L-TYPE

MODEL NO.	VOLTAGE	Hz	WATTAGE	REMARK
HLA-243056	AC 240V	50/60Hz	30±10%	OPTION
HLA-223056	AC 220V	50/60Hz	30±10%	STANDARD
HLA-113056	AC 110V	50/60Hz	30±10%	OPTION
HLA-103056	AC 100V	50/60Hz	30±10%	OPTION
HLD-024300	DC 24V	-	30±10%	STANDARD
HLD-110300	DC 110V	-	30±10%	OPTION
HLD-125300	DC 125V	-	30±10%	OPTION

□ CABLE CONNECTION LINE

□ 외형도(DIMENSIONS)



□ 적용품목(APPLICATION MODEL)

MODEL	A	B	C	BODY TYPE	PT(Rc) SIZE	PRESSURE	BODY MAT'L
HKW 3212BNO-EX	122	86	109	SCREW	PT(Rc)1 1/4"	0~7Kgf/cm ²	BRASS
HKW 4014BNO-EX	122	86	201	SCREW	PT(Rc)1 1/2"	0~7Kgf/cm ²	BRASS
HKW 5020BNO-EX	140	100	206	SCREW	PT(Rc)2"	0~7Kgf/cm ²	BRASS
HKW 3212SNO-EX	122	86	108	SCREW	PT(Rc)1 1/4"	0~7Kgf/cm ²	STS
HKW 4014SNO-EX	122	86	201	SCREW	PT(Rc)1 1/2"	0~7Kgf/cm ²	STS
HKW 5020SNO-EX	140	100	206	SCREW	PT(Rc)2"	0~7Kgf/cm ²	STS

*기타사양은 HSE에 문의 요망, 도면치수 및 제품사양은 품질향상을 위해 변경될 수 있음
 CONSULT WITH HSE ABOUT OTHER OPTION SPECIFICATIONS,
 PRODUCT SPECIFICATION IS TO SUBJECT TO THE QUALITY ENHANCEMENT.

HSE 방폭용 솔레노이드 밸브(2-WAY N/O FLANGE TYPE) Certification No. 18-GA2BO-0123X

Explosion proof solenoid valve Exd mb IIC T4 IP67

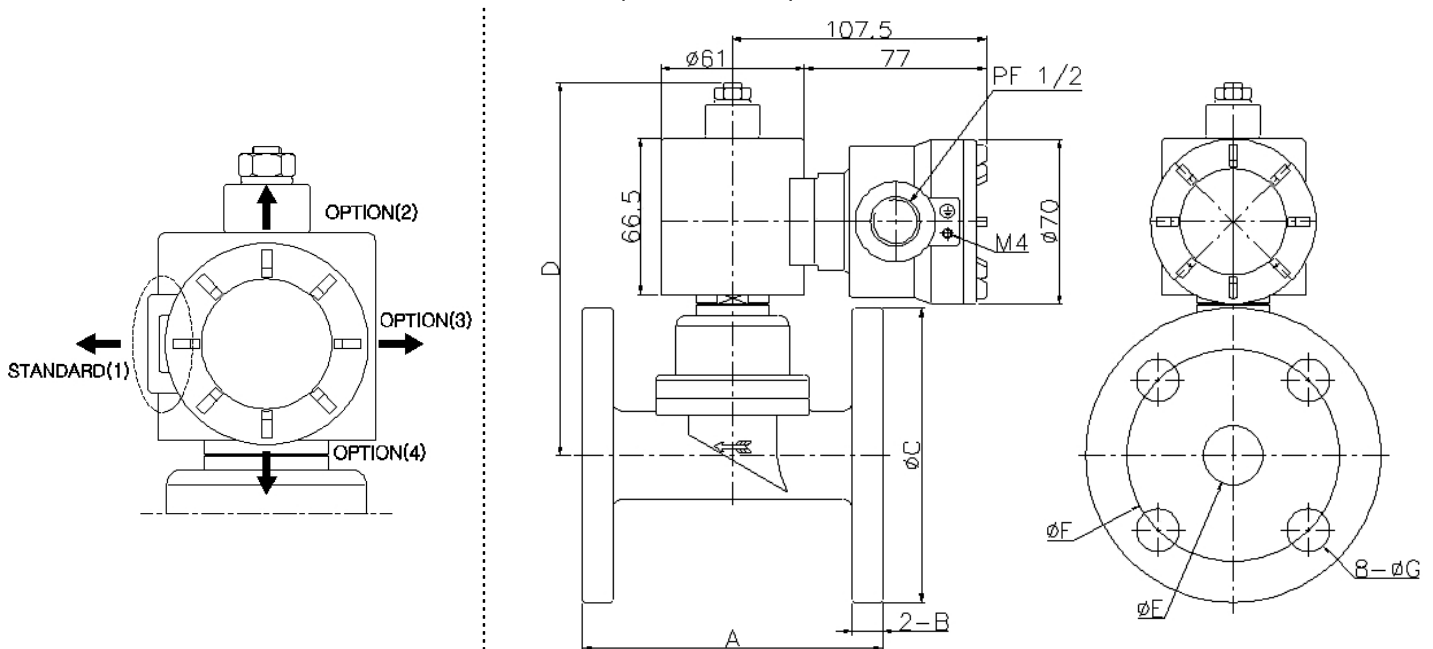


□ 형식(MODEL) : 방폭코일 M-TYPE

MODEL NO.	VOLTAGE	Hz	WATTAGE	REMARK
HMA-243056	AC 240V	50/60Hz	30±10%	OPTION
HMA-223056	AC 220V	50/60Hz	30±10%	STANDARD
HMA-113056	AC 110V	50/60Hz	30±10%	OPTION
HMA-103056	AC 100V	50/60Hz	30±10%	OPTION
HMD-024300	DC 24V	-	30±10%	STANDARD
HMD-110300	DC 110V	-	30±10%	OPTION
HMD-125300	DC 125V	-	30±10%	OPTION

□ CABLE CONNECTION LINE

□ 외형도(DIMENSIONS)



□ 적용품목(APPLICATION MODEL)

MODEL	A	B	C	D	E	F	G	BODY TYPE	FLANGE	PRESSURE	BODY MAT'L
HKW 2510BFO-EX	127	13	125	160.5	25	90	18	FLANGE	25A	0~7Kgf/cm ²	BRASS
HKW 2510SFO-EX	127	13	125	160.5	25	90	18	FLANGE	25A	0~7Kgf/cm ²	STS
HPW 8030FO-EX	255	16	185	213.5	80	150	19	FLANGE	80A	1.0~10Kgf/cm ²	BRASS

*기타사양은 HSE에 문의 요망, 도면치수 및 제품사양은 품질향상을 위해 변경될 수 있음

CONSULT WITH HSE ABOUT OTHER OPTION SPECIFICATIONS,
PRODUCT SPECIFICATION IS TO SUBJECT TO THE QUALITY ENHANCEMENT.

HSE 방폭용 솔레노이드 밸브(2-WAY N/O FLANGE TYPE) Certification No. 18-GA2BO-0121X

Explosion proof solenoid valve Exd mb IIC T4 IP67

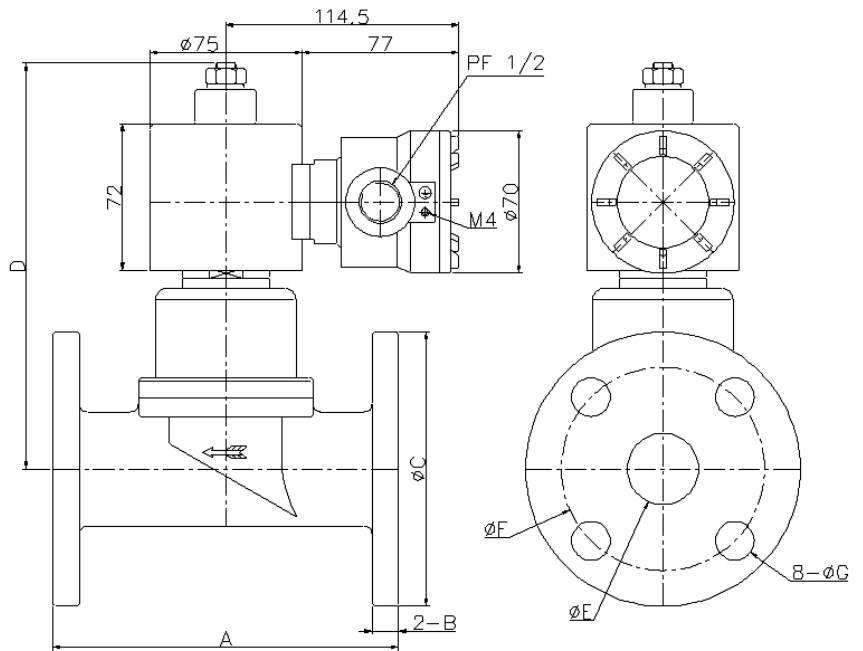
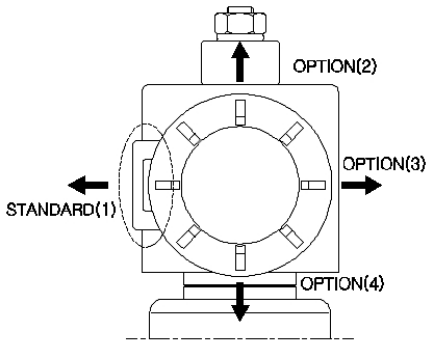


□ 형식(MODEL) : 방폭코일 L-TYPE

MODEL NO.	VOLTAGE	Hz	WATTAGE	REMARK
HLA-243056	AC 240V	50/60Hz	30±10%	OPTION
HLA-223056	AC 220V	50/60Hz	30±10%	STANDARD
HLA-113056	AC 110V	50/60Hz	30±10%	OPTION
HLA-103056	AC 100V	50/60Hz	30±10%	OPTION
HLD-024300	DC 24V	-	30±10%	STANDARD
HLD-110300	DC 110V	-	30±10%	OPTION
HLD-125300	DC 125V	-	30±10%	OPTION

□ CABLE CONNECTION LINE

□ 외형도(DIMENSIONS)



□ 적용품목(APPLICATION MODEL)

MODEL	A	B	C	D	E	F	G	BODY TYPE	FLANGE	PRESSURE	BODY MAT'L
HKW 3212BFO-EX	170	13	135	200.5	35	100	18	FLANGE	32A	0~7Kgf/cm ²	BRASS
HKW 4014BFO-EX	170	13	140	200.5	40	105	18	FLANGE	40A	0~7Kgf/cm ²	BRASS
HKW 5020BFO-EX	180	14	155	200.5	50	120	18	FLANGE	50A	0~7Kgf/cm ²	BRASS
HKW 3212SFO-EX	170	13	135	201.5	35	100	19	FLANGE	32A	0~7Kgf/cm ²	STS
HKW 4014SFO-EX	180	13	140	203.5	40	105	19	FLANGE	40A	0~7Kgf/cm ²	STS
HKW 5020SFO-EX	180	14	155	208.5	50	120	19	FLANGE	50A	0~7Kgf/cm ²	STS

*기타사양은 HSE에 문의 요망, 도면치수 및 제품사양은 품질향상을 위해 변경될 수 있음

CONSULT WITH HSE ABOUT OTHER OPTION SPECIFICATIONS,
PRODUCT SPECIFICATION IS TO SUBJECT TO THE QUALITY ENHANCEMENT.